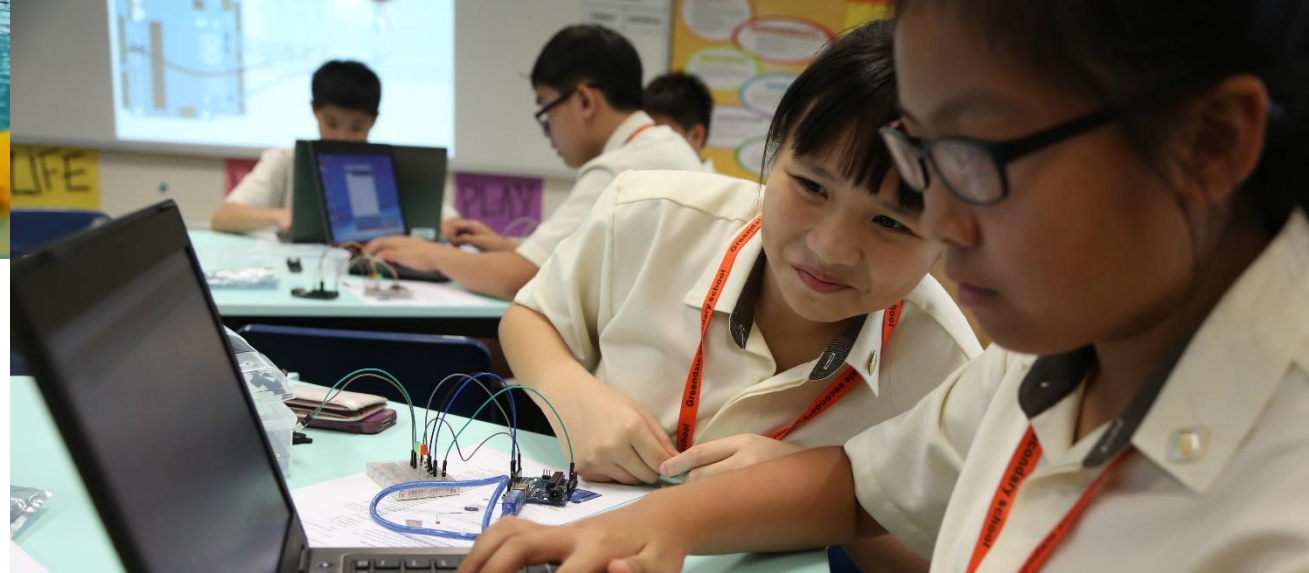
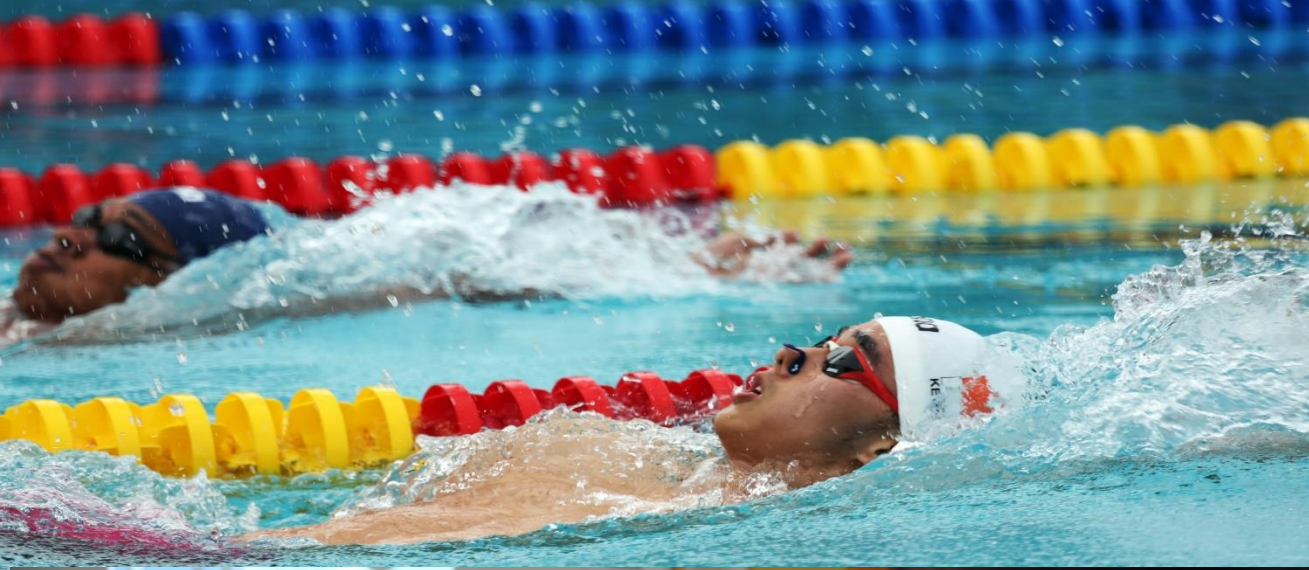




# DSA Information





# **Direct School Admission for Secondary Schools (DSA-Sec)**



# Entering a secondary school



## PSLE/S1 Posting Process

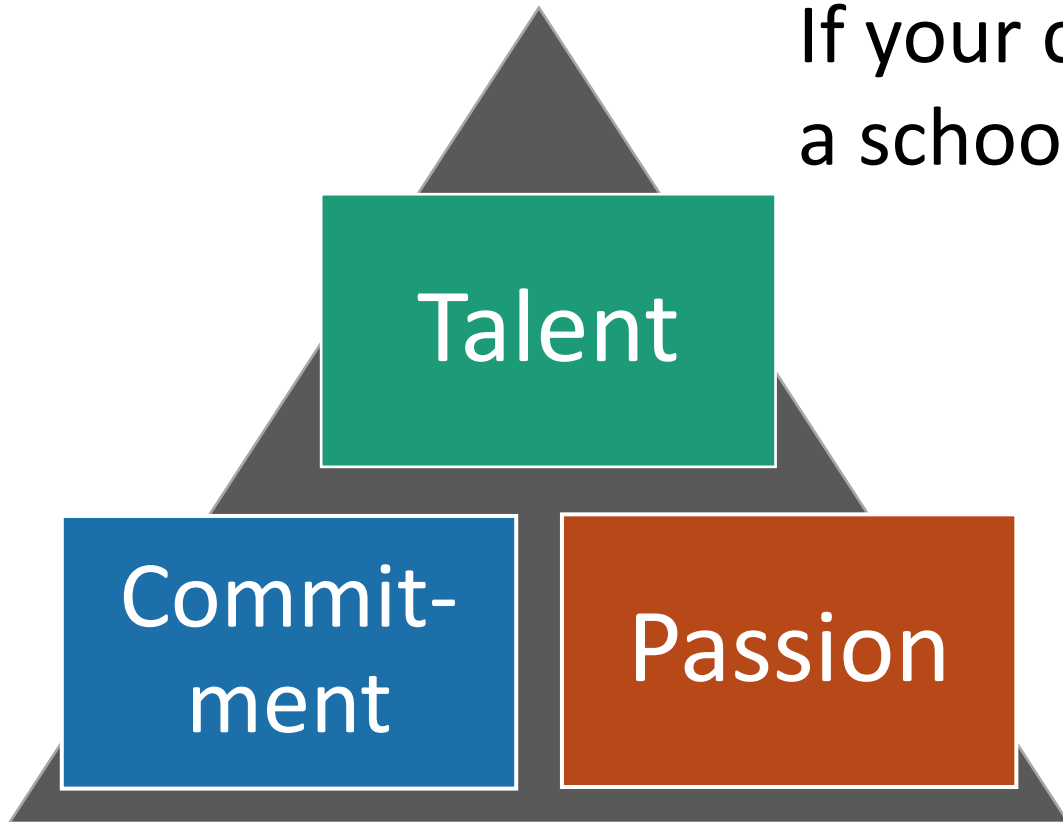
- Based on a student's **PSLE score**
- **Most students enter secondary schools this way**



## DSA-Sec

- Based on a diverse range of **talents and achievements in specific academic subjects or non-academic areas, beyond what the PSLE recognises**
- Allows students to **access school programmes to develop their talents**

# Is the DSA-Sec right for my child?



If your child has specific **talents** which a school offers the DSA-Sec in

And is **passionate** about and **committed** to developing his/her strengths and interests

DSA-Sec can support his/her development in that talent area.

# Which school should my child apply to?

- Look for a school with **programmes that match your child's strengths and interests**
  - Schools are looking out for students whose interests and talents they can develop further.
  - Learn more about the secondary school's **pace of learning** and overall range of programmes
- **Get the latest information** about what each school offers by:
  - Visiting schools' websites
  - Attending schools' Open Houses to also experience their environments and cultures
  - Visiting the MOE's DSA-Sec website

# What are schools looking for?

- The selection process differs across schools, and across different DSA categories.
- Generally, schools are looking for candidates with:

## Talent, passion, commitment

- Schools may look at **achievements** and **participation** (e.g. in Junior Sports Academy).
- Schools may also conduct tests, trials or selection camps to identify students with **strengths, or sound fundamentals and potential**, in particular areas.

## Strong personal qualities

- Schools may look at CCA records and VIA participation.
- Schools may also conduct interviews.

## Good academic fit

- Schools may look at primary school results to ensure students can benefit from the school's pace of learning.

*Students, be sincere, be genuine, and be yourself – if you are a good fit for the school, it will show.*

# DSA-Sec Application Portal

- Students will be able to apply for DSA through a centralised **DSA-Sec Application Portal**, using a common application form.
- The portal has simplified and streamlined the DSA application process (regardless of which school student is applying to), making it convenient for all students.
- <https://www.moe.gov.sg/secondary/dsa>

# What is the timeline for DSA-Sec?

- Apply for DSA-Sec through **DSA-Sec Application Portal**.
- <https://go.gov.sg/dsa-sec-application>

From 4 to 31 May (3pm)  
(4 weeks)

Late Jun - Sep

- Shortlisting and selection by secondary schools. Each secondary school has different selection criteria for its categories and programmes.
- Students to attend auditions, trials or interviews (face to face).
- Schools will inform you of the selection outcome **by mid Sep**.

- Rank your offers if you receive offers from multiple schools and **submit\* online**.
- On Waitlist

Late-Oct

\*Withdraw before submission of acceptance and/or preference)

Late-Nov

You will know whether you have been allocated to a school through the DSA-Sec, at the same time you receive your PSLE results.



# Features of the DSA-Sec Portal

## 1. Centralized online applications

- Applications will be centralized across all participating secondary schools
- The form will be **easy to fill** – you only have to key in contact details and your school and talent choices  
Optional: The portal will also allow you to indicate any non-school-based achievements and activities related to the talent areas you applied for.
- You **do not need to submit testimonials or hardcopy documents** to the secondary school during application.

## 2. Application using Singpass

- Parents can access the Portal via their SingPass login. Only one parent's SingPass login is required.
- **Parents who are unable to access their SingPass can approach the primary school for assistance.**

## 3. No application fees

- No fees charged for DSA-Sec application and selection.
- We encourage all students who are passionate about and committed to developing particular talents to apply, regardless of family backgrounds.

# Features of the DSA-Sec Portal

## 4. Making choices in the DSA-Sec portal

- Through the portal, you can easily identify schools that offer programmes for your child's talent area.
- You can indicate up to three choices. For each choice, you will need to choose a secondary school and a talent area from that school.
- The order of the choices does not matter during application.
- Of the three choices, up to two choices may be used to apply to the same school, for two different talent areas of that school. This is to cater to your child's multiple interests and allow your child to choose different schools which can develop his/her strengths and interests.
- You and your child are encouraged to **consider your choices carefully and** manage the time and effort participating in multiple trials and interviews.

**Note.** Students can apply separately to School of the Arts and Singapore Sports School, on top of the DSA-Sec choices made through the DSA-Sec Portal.

# Examples of Possible Choice Combinations

EXAMPLE 1	Talent(s)	School(s)	Your child can apply to <u>up to three different schools</u> , with no restrictions on the talent areas.
	Choir	School A	
	Choir	School B	
	Choir	School C	
EXAMPLE 2	Talent(s)	School(s)	If your child chooses two areas in one school, he/she can apply to <b>two different schools only</b> ,
	Choir	School A	
	String Orchestra	School A	
	Choir	School B	
EXAMPLE 3 (Not allowed)	Talent(s)	School(s)	Your child cannot use all three choices on one school. He/she can leave the third choice blank or choose another school.
	Choir	School A	
	String Orchestra	School A	
	<del>Mathematics</del>	<del>School A</del>	

# What are the possible DSA-Sec outcomes?

- **Confirmed Offer (CO)** → Your child has a place reserved in the school, as long as his/her PSLE results qualify him/her for the school.
- **Wait List (WL)** → Your child will be given a place in the school if other students with Confirmed Offers do not take up those offers, and if his/her PSLE results qualify him/her for the school. Allocation will be based on students' rank on the school's Wait List.
- **Unsuccessful** → Your child has not been given a place in the school. If your child still wishes to enter the schools he/she applied for, he/she can apply through the S1 Posting process using his/her PSLE results.



# How are DSA-Sec places allocated?

## Example: Confirmed Offer vs Wait List

Hani is given Confirmed Offer by Courage Secondary. Hani selected Courage Secondary as her 2nd choice.

Victor is offered a Wait List by Courage Secondary. Victor selected Courage Secondary as his 1st choice.

## Who will be considered for a place in Courage Secondary first?

Hani will be considered for a DSA-Sec place in Courage Secondary before Victor, as she has a Confirmed Offer.

## Where can I find more information on the DSA-Sec?

- Check the [MOE DSA-Sec website](#) for important dates and timelines, and for information on how DSA-Sec will be conducted.
- The MOE DSA-Sec website also contains information on DSA categories and secondary schools offering them.

## Points to Note

1. Students successfully allocated to their DSA-Sec schools will **NOT be allowed to participate in the annual S1 Posting to opt for secondary schools and** are expected to honour the commitment to the allocated DSA-Sec school for the entire duration of the programme.
2. Students will also **NOT be allowed to transfer to another school** after the release of the PSLE results.
3. Testimonials are no longer required by DSA-Sec schools.
4. Face-to-face DSA trials/auditions/interviews will be conducted at DSA-Sec schools this year.

# Exceptions

Application through DSA only – NO Sec 1 Posting	
Through DSA Portal	
NUS High School of Math & Science	School of Science & Technology (SST)
Through School’s Own Portal	
Singapore Sports School (SSS) <a href="https://www.sportsschool.edu.sg/admissions/admission-to-secondary-1">https://www.sportsschool.edu.sg/admissions/admission-to-secondary-1</a>	School of the Arts (SOTA) <a href="https://www.sota.edu.sg/">https://www.sota.edu.sg/</a>



**Thank you!**