



Lakeside Primary School

**Orientation for
2025 Primary 1
Parents and Students**





Programme

- **Principal's Address**
- **Ready, Get Set, Go! - Preparing Our Children for Primary Education**
- **Parent Support Group**
- **Student Care Centre**
- **Year Head's Address**
- **Important Information**



Lakeside Primary School

Principal Address



**Welcome to our
Lakeside family!**



Our School Leaders



**MRS RINA LIANG
PRINCIPAL**



**MS CHUA LENG LENG
VICE-PRINCIPAL**



**MS TAN HUI PING
VICE-PRINCIPAL**



**MS CHARMAIN HAN
VICE-PRINCIPAL**



MISSION

**Empower
every student
to make a
positive impact
on the
community.**



VISION

**Creative Thinkers,
Empathetic Leaders,
Lifelong Learners**





Lakers *PRIDE*

Love

Perseverance

Respect

Integrity

Diligence

Excellence



Our Philosophy

Every Individual **CAN**

Contribute

Achieve and be

Nurtured

**MAKE A POSITIVE
DIFFERENCE**



TAKE CHARGE!





MAKE A POSITIVE DIFFERENCE



WORDS & ACTIONS

Touching lives through what we say & do.

ROLE MODELLING

Stories we tell through our lives



IMPACT



Imprints we leave behind



When & Where?

❖ Greetings. Conversations. Group Discussions. Recess Play. Interactions

Signature Programmes @ Lakeside





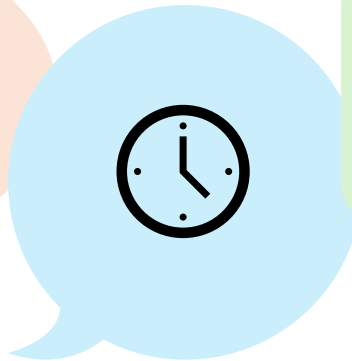
You can start talking to your child about the following:



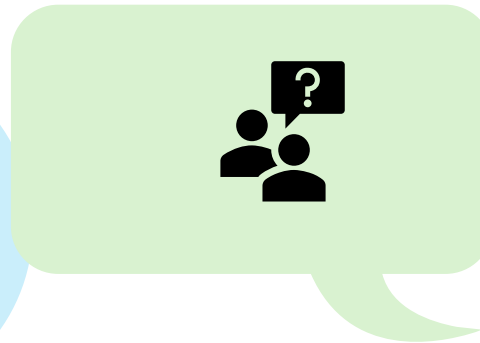
Adjusting to a larger learning environment



Interacting with more peers and teachers



Adapting to longer school hours and new routines



Taking the initiative to ask for help



Becoming more independent and responsible



Relating Well to Others

Build your child's interpersonal skills by:

01

Modelling the use of friendly and polite phrases

"May I please..."

"Hi! My name is...What is your name?"

"Could you help me with..."

02

Providing opportunities for your child to share and take turns during playtime with other children



Nurturing Positive Attitudes

Developing the right learning attitude will help your child learn better. You can encourage your child to:



Ask questions about their experiences and their observations on the world around them



Reflect on learning experiences, learn from mistakes and try ways to do something better



Persevere even when faced with challenges



TAKE CHARGE!

**MAKE A
POSITIVE DIFFERENCE**



**On-Task
Tiger**



**Planner
Penguin**



**Sensible
Seal**



**Reflective
Raccoon**



**Dependable
Dolphin**





3 areas we can work together on to foster School-Home Partnership

1 Respectful Communication

2 Role Models

3 Real Connections





Respectful Communication

Foster kind words and actions between schools and educators



Listen to and understand each other's perspectives and concerns regarding each child



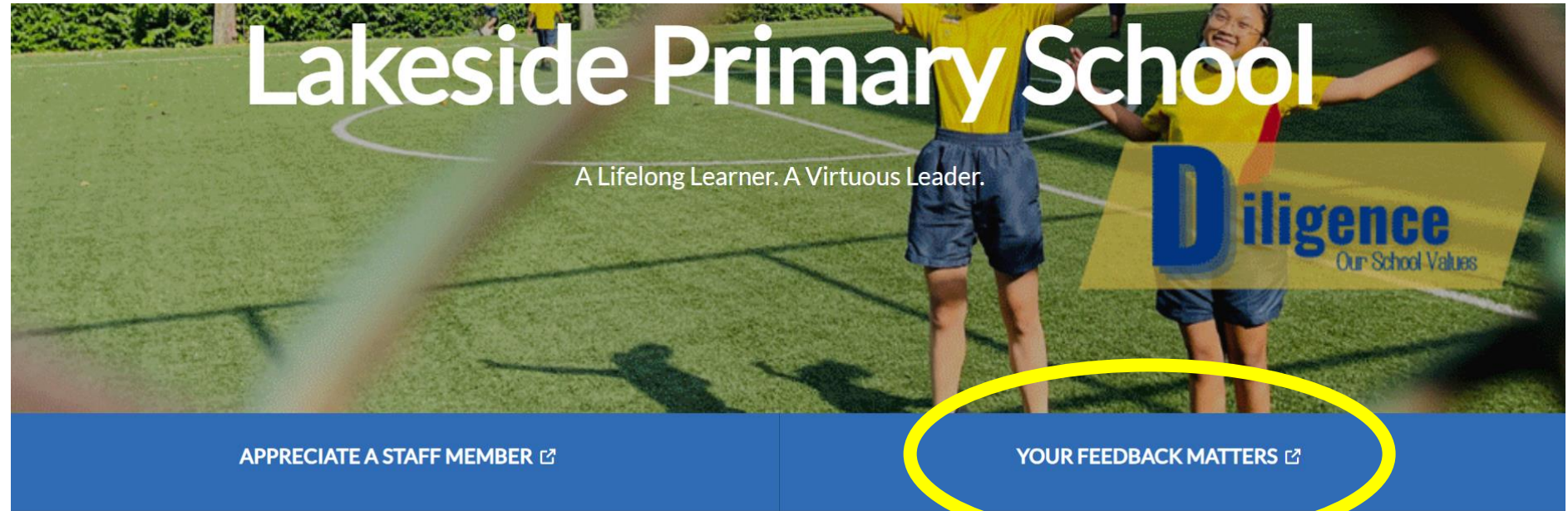
Communicate kindly using official channels. Teachers are not required to share their personal mobile numbers



Respect each other's time by communicating during working hours



Easy Communication With Us



School Contact Details

Address	161 Corporation Walk Singapore 618310
Bus	30, 49, 98, 98M
Nearest MRT Station	Lakeside
General Office	Opening hours: 7.30am to 5.30pm
Tel / Fax	Tel: 62620918 / Fax: 62621021
Email	lakeside_ps@moe.edu.sg



Role Models

Show our children the skills and values they need for life



Find joy in everyday experiences with our children



Instill confidence by encouraging responsibility and believing in our children's abilities



Model good values in words and actions

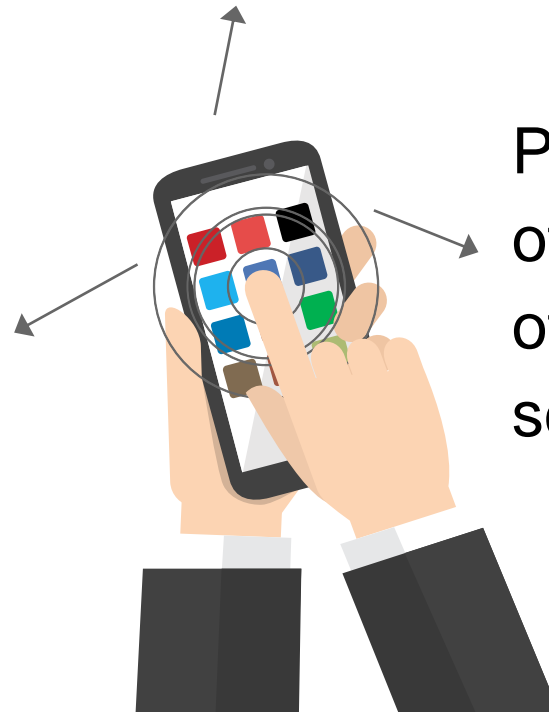


Real Connections

Cultivate strong relationships and healthy habits in this digital age

Establish good habits for our children to stay confident and in control of their technology use

Build strong bonds through shared experiences and meaningful conversations



Provide a balanced mix of engaging online and offline activities, at school and at home



BUILDING PARTNERSHIP WITH THE SCHOOL

Maintain regular communication through official school channels.

- Have regular conversations with teachers in both academic and non-academic areas - this will help you better guide your child's development
- **Speak positively** of teachers & the school
- **Work with teachers** to support your child
- **Surface any concerns** to Form teachers or subject teachers



PARENT SUPPORT GROUP

Join the Parent Support Group (PSG)!

- The PSG consists of a group of dedicated parents who partner the school to support fellow parents in nurturing their children
- It is a platform for parents to network, share, learn and support each other in this parenting journey





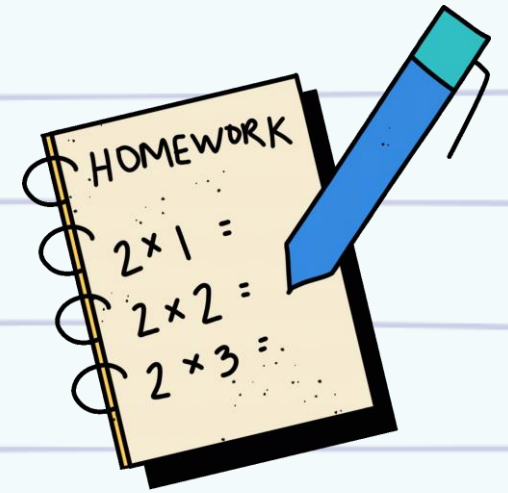
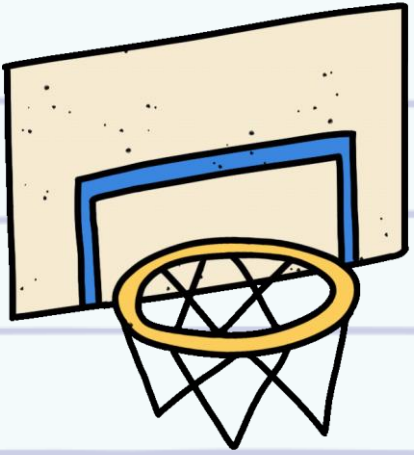
Lakeside Primary School

**Ready, Get Set, Go! - Preparing Our
Children for Primary Education**

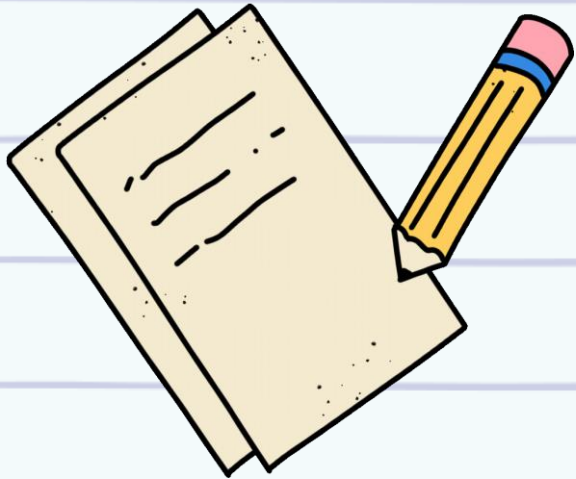


Lakeside Primary School

Parent Support Group (PSG)



LAKESIDE PRIMARY

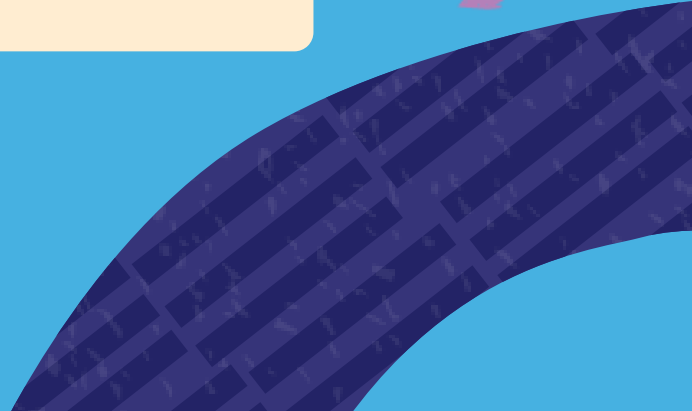
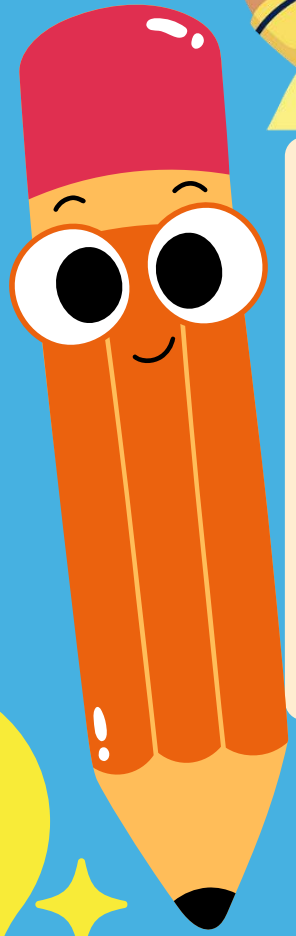


FOR PARENTS, BY PARENTS





INTRODUCTION



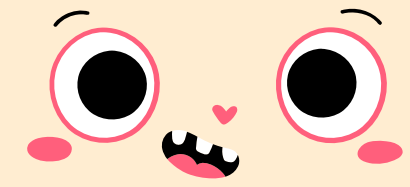


FOR PARENTS BY PARENTS

Collaborative initiative designed to **empower parents** as active participants in our children's education

We create an **inclusive environment** where parents can share their experiences, seek advice, and discuss concerns ranging from academic challenges to social issues

We play crucial role in building a **strong, supportive school community** that enhances student education journey and well-being



Not just about volunteering



It's a powerful message that



you are your kids' **biggest**



supporter and that their

journey matters



VISION

A community of dedicated and committed parents coming together to work in partnership with the school to nurture the holistic development of our students.



MISSION

To play a key role in inspiring and guiding fellow parents who wish to **contribute to the school's efforts**, coordinating their time and effort effectively to give our children the **best educational experience**.

ROLE OF THE PSG



Partner-In-Education

Supporting and strengthening the school's programmes

Bridge

Fostering a strong sense of community and engagement

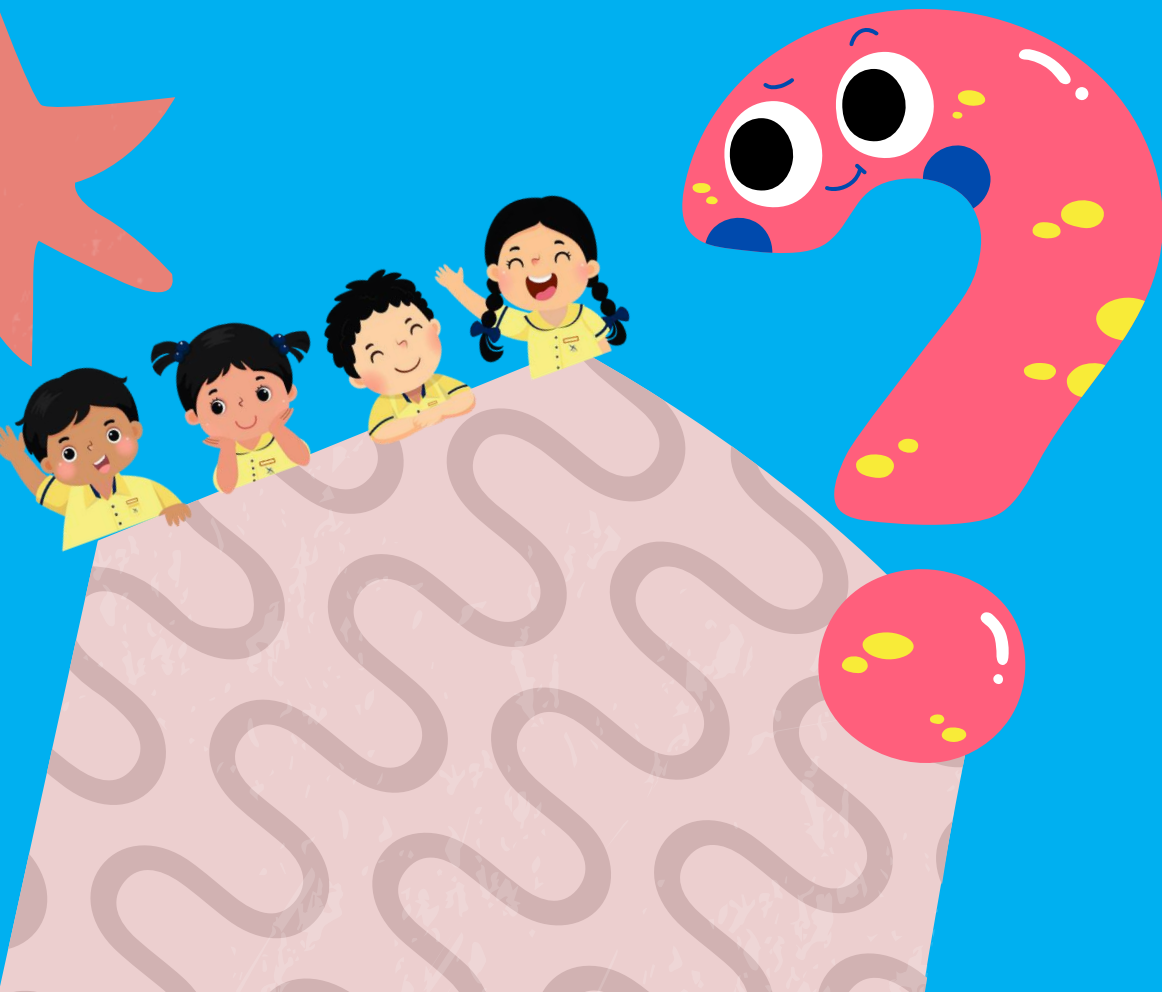
Resource & Support

Providing a safe platform for support and collaboration

Magnet

Creating strong network

HOW CAN YOU CONTRIBUTE?



TIME

Initiate, plan and participate in activities

TALENT

Contribute knowledge and expertise and leverage interests and networks

THOUGHTS

Provide feedback, ideas, advice and support

IN ALL OUR ADVENTURES. . . .



We exemplify the Executive Functioning Skills (EFS)

- Not only model these **essential skills**
- But also **guide** our children in their own development
- **Empower** our children to **cultivate** these essential skills in their own lives



On-Task Tiger



Reflective Raccoon



Sensible Seal



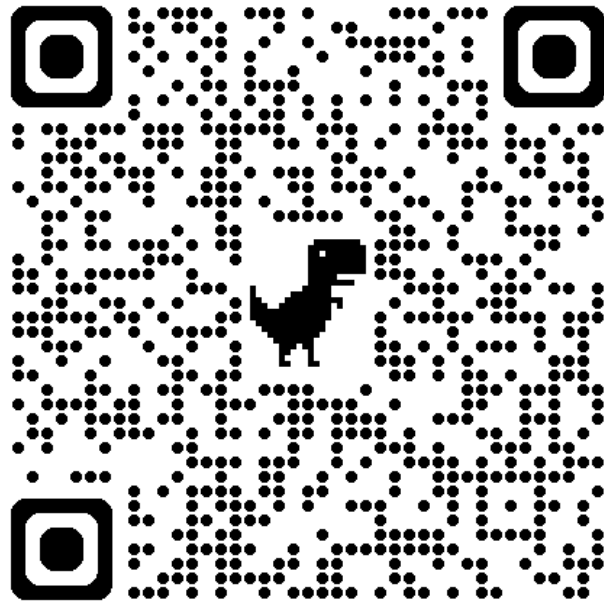
Dependable Dolphin



Planner Penguin



**COME BE A PART OF OUR
COMMUNITY!**



More info. Email
psglakesidepri@gmail.com





Lakeside Primary School

Student Care Centre

Nascans @ Lakeside Primary

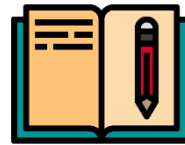


OUR KEY FOCUS



Child's Well-Being

- A comfortable and conducive environment for learning and for play
- Cultivate good habits and a proper mindset
- A structured timetable to ensure safety
- A well-balanced and nutritious meal



Homework Supervision & Spelling Revision

- To ensure full homework completion before students head home
- To ensure the timely revision of spelling



Delivery of Quality Programmes

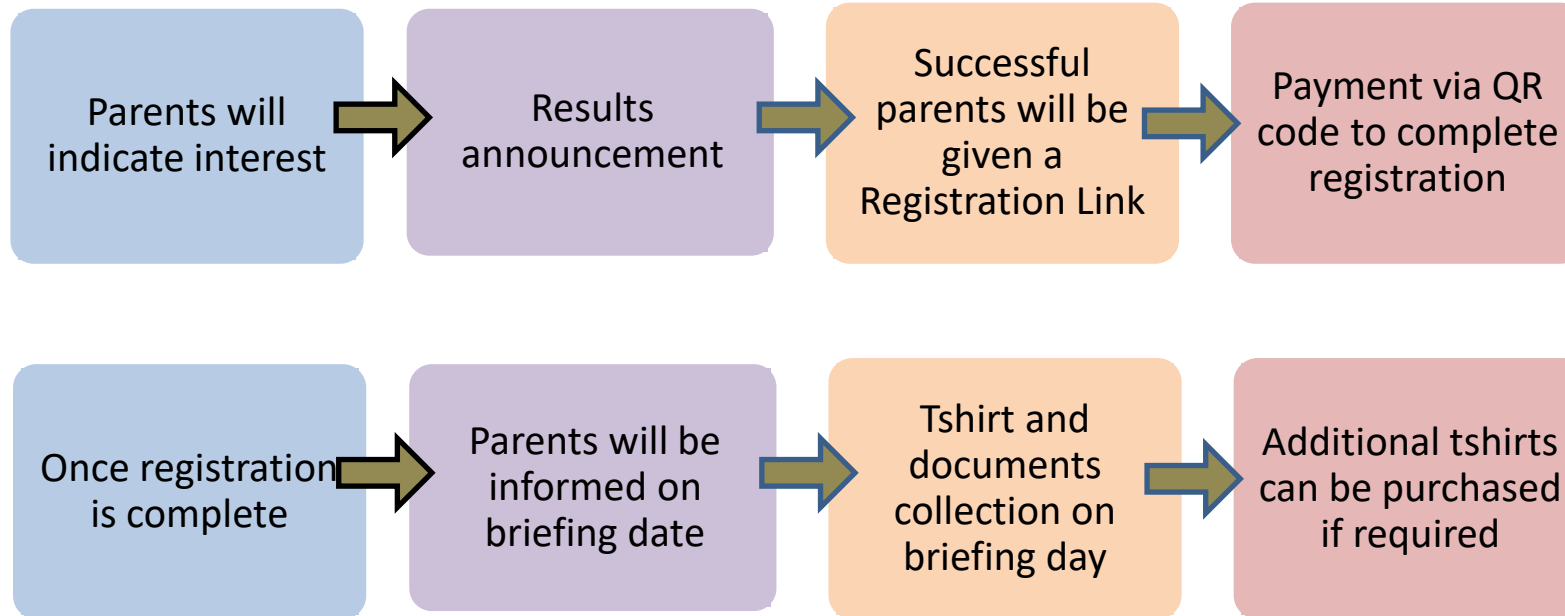
- Academic Development
- Character Development
- SET for the Future
- Enrichment
 - Impression ARTS/Music in Motion
- Community Involvement and Learning Journeys

FEE STRUCTURE

S/N	Item	Amount Payable (with GST)
1	Monthly Fee	\$230
2	Deposit	\$230
3	1 Nascans T-Shirt	\$10
Total Upon Enrolment		\$490 (Non-SCFA) – 3 shirts
		Subject to approved subsidy (SCFA)
Note:	No additional surcharge on School Holidays / School closure days (E.g. PSLE Marking days etc.)	

REGISTRATION

Registration Flow



COMMUNICATION



Whatsapp / Call
81575046



Email
lksc@nascans.com



Lakeside Primary School

Year Head Address



1. Join Classpoint by scanning the following QR code
2. Key in the classcode and your name
3. Click Join





★ Multiple Choice

My child needs reminders to start on a task.

- a) often
- b) sometimes
- c) rarely



Multiple Choice

My child loses his/her things easily.

- a) often
- b) sometimes
- c) rarely



★ Multiple Choice

My child will miss out details/
instructions after receiving them.

- a) often
- b) sometimes
- c) rarely

Executive Functioning Skills (EFS)

Refers to a set of skills.

These skills underlie the capacity to plan ahead and meet goals, display self-control, follow multiple-step directions even when interrupted, and stay focused despite distractions, among others.

Center on the Developing Child, Harvard University





TAKE CHARGE!

**MAKE A
POSITIVE DIFFERENCE**



**On-Task
Tiger**



**Planner
Penguin**



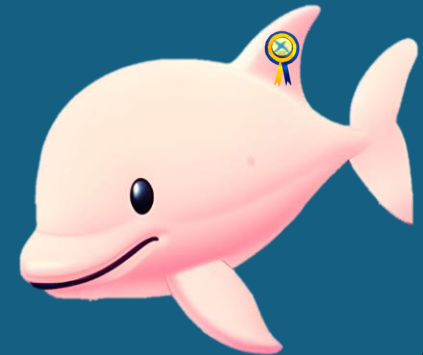
**Sensible
Seal**



**Reflective
Raccoon**



**Dependable
Dolphin**





TAKE CHARGE!

MAKE A POSITIVE DIFFERENCE



A Laker who is on task.

Sustained Attention & Task Initiation



A Laker who plans and organises well to complete tasks on time.

Planning, Organisation & Time Management



A Laker who takes charge of emotions well.

Emotional Control, Response Inhibition & Flexibility



A Laker who reflects and does not give up.

Metacognition and Goal-Directed Persistence



A Laker who retains information well.

Working Memory





**How will it look like in
Lakeside?**



TAKE CHARGE!

MAKE A POSITIVE DIFFERENCE



Talk about the new **routines and expectations** e.g. longer school hours, no play all the time, no more afternoon naps, silent reading



Teach them **social skills** e.g. meeting new people, following rules, problem solving, listening, managing conflict



Teach **independence** e.g. tying of shoelaces, taking care of own belongings, handling money.



Teach them what to do in case of emergency e.g. missing school bus, forget to bring pocket \$\$\$.



Executive Functioning Skills Information and Orientation Booklet 2025



<https://go.gov.sg/lakesidepri-p1>

<https://www.lakesidepri.moe.edu.sg/for-parents/forms-links/>



Orientation Booklet 2025

General School Information

Getting Ready for School

Canteen Information

Parents Gateway Onboarding Guide

Parents Support Group



Orientation Booklet 2025 (pg6)

Time	Parent's Programme
8.30 a.m. – 12 p.m.	<ol style="list-style-type: none">1. Principal and Year Head Address2. Panel Question & Answer Session3. Meet the Teachers4. Little Lakers, Take Charge! (Recess)5. Little Lakers, Soar! (Classroom Activity)6. Little Lakers Falcon Challenge



Orientation Booklet 2025 (pg6)

- Classes will only be informed by email in early December.

	Students		Parents
Class	Reporting Time	Dismissal Time	Venue for Parents
1 Love	8.30 a.m.	12 p.m.	School Hall
1 Perseverance	8.35 a.m.		
1 Respect	8.30 a.m.		
1 Integrity	8.35 a.m.		
1 Diligence	8.30 a.m.		
1 Excellence	8.35 a.m.		
1 Confidence	8.30 a.m.		
1 Creativity	8.35 a.m.		






Orientation Booklet 2025 (pg7-8)

- P1 students will need to bring along these items on the first day of school:
 1. Report Book
 2. My Journey File with dividers and 10 plastic pockets
- Bring the pencil case, Student Handbook and Homework file every day.
- The form teachers will inform the parents on the schedule for the collection of the books.



Orientation Booklet 2025 (pg11)

- Download the Parent Gateway app to receive letters, notifications and give consent to school programmes and announcements

For iOS	For Android	For Huawei
 A QR code for downloading the Parent Gateway app on iOS. The QR code has a circular logo in the center with the text "GO.gov.sg".	 A QR code for downloading the Parent Gateway app on Android. The QR code has a circular logo in the center with the text "GO.gov.sg".	 A QR code for downloading the Parent Gateway app on Huawei. The QR code has a circular logo in the center with the text "GO.gov.sg".



What's Next?

Look out for

- the email in early December for your child's class
 - link to indicate the dismissal arrangement for Day 1, 2 Jan 2025
 - Notifications on Parent Gateway (PG)
 - information uploaded on the school's website
1. Curriculum Briefing Videos
 2. Submit your questions



Feedback



<https://go.gov.sg/2025-p1-orientation>

<https://go.gov.sg/2025-p1-orientation>



Lakeside Primary School

**Thank you and see you on 2
January 2025!**